

Rosslare Newsletter

Easter 2024 Edition

Rosslare Free
Community & Sports Centre

Welcome to the Easter 2024 Edition of Rosslare Newsletter

HAPPY EASTER



Support our
Building &
Roof Fund

DONATE NOW
idonate/rcda

New 2 You

Charity Boutique

Open: Mon – Sat
10:30am – 5pm

**Easter Opening
Centre Hours**

Good Friday 9am – 9pm
Easter Saturday 9am – 5pm
Easter Sunday 10am-5pm
Bank Holiday Monday
10am – 5pm

Office Admin Services

- ❖ Printing
 - ❖ Photocopying
 - ❖ Scanning
 - ❖ Word Processing
- Available in office at
reasonable prices

This year's Easter dates have meant St Patrick has only barely had time to get off stage before the Easter parades, chickens and of course, every conceivable size, flavour and price tag of Easter Egg take over the spotlight. Let's hope for a sunny backdrop for the Easter festivities we have lined up at the Community Centre.

Emil's Tennis camps are running throughout the holiday period and cater for a range of age groups. If your children would like their fun with a Mediterranean flavour, then take a look at Ernesto's Easter camp; the emphasis is on fun and games, picking up some useful Spanish phrases along the way. The ever popular Nutty Scientists return on 2nd April for a 4 day camp All camp details can be found on our website www.rosslareholidayresort.ie

Our next major project is to rehome our maintenance staff and all their tools and equipment, alongside the provision of new quarters for the Men's and Women's sheds. Demolition of the old buildings has now been completed and we will bring you news of the reconstruction in the coming weeks and months. In the meantime, the team have been keeping busy with a number of projects. New storage units to store the soft play equipment and toys for the toddler group are now in place, followed by a new storage facility for the Centre's sports equipment.

Indoor activities have been many and varied during the winter and spring months. The crafty side of life is well catered for with sewing, crochet & knitting, and two art groups meeting on a weekly basis. On the sporting front we offer Yoga, Pilates, badminton, table tennis, and our most recent addition, Pickleball! This hugely popular game has really taken off in Rosslare. Played on an indoor badminton court, it's an ideal choice for the Irish spring weather.

Plans are in progress for our Summer season when we hope you can spend a little more time enjoying our outdoor pursuits. Along with a range of camps and workshops, annual favourites including the Teddy Bears' Picnic and SummerFest are lined up for their day in the sun - we can only hope!



Keep in touch



To Contact Rosslare Community & Sports Centre

Call us on 053 9132202 Email info@rosslarestrand.ie

Website www.rosslareholidayresort.ie

What's Happening...



Monday

Sewing Class – 10am to 12.30pm
Art Class – 1.30pm to 3.30pm
Men's Shed 2pm to 4pm
St Paul's Running Club – 5.30pm to 7.30pm
CAN Youth Club – 6pm to 7pm (every 2nd Mon)
Girls Soccer U 11s – 6.30pm to 7.30pm
Boxfit – 7pm to 8.30pm

Tuesday

Sewing Class – 10am to 12.30pm
Walking Football – 11am to 12 noon
Shine Bright Drama Class – 3pm to 6pm
Soccer Under 8's & 9's – 6 pm to 7pm
Menapians – 7pm to 8pm
Rosslare Boxing Club – 7pm to 9pm
Social Evening – 7pm to 9pm (2 per month) May and June

Wednesday

Knitting and Crochet Club – 11am to 12.00noon
Women's Shed – 11am to 1pm
Rosslare Bowling Club – 12.30pm to 4.30pm
Spanish Class – 3-5pm
Under 10s & 11s Soccer – 6 to 7pm
St Paul's Running Club – 5.30pm to 7.30pm
Judo – 6.30 to 7.30pm
Badminton – 7.30 to 9pm

Thursday

Little steps baby/Parent group 9.30am to 11am
Art Class – 11.30 am to 1.30pm
Men's Shed – 2 pm to 4pm
Kids Tennis – 4pm to 6pm
Under 12s Soccer – 6.30pm to 7.30pm
Menapians - 7pm to 8pm
Rosslare Boxing Club – 7pm to 9pm

Friday

Hatha Yoga – 8.15am to 9.30am
Rosslare Tennis Club – 10am to 11am
Pilates – 10am to 11am
Emil's Tennis Club – 4pm to 5pm
St Paul's Running Club - 6.00pm to 7.00pm
Rosslare Youth Club – 7.00pm to 9.00pm

Saturday

DANCEFIT Amanda - 9.45 am
Active Dance 50+ - 11am
Yoga on the Beach – 10:30am
Soccer Academy – 10am to 11am
Tennis Lessons - 12 to 2pm
Badminton Club – 12pm to 1.30pm
Rosslare Bowling Club – 12pm to 4pm

Contact Numbers

Local Groups

Little Steps - Community Centre

Art Class: Jane Meyler 086 1647255

Badminton: Isabel 087 919 2550

Crochet/ Knit Group: Sue 085 2866983

Dance Fit: Amanda 087 9713339

Judo: Fabiola: 083 033 5866

Men's Shed: Jim 087 6815029

Pilates: Theresa 089 4620552

Rosslare Bowls Club: Ken 087 4174169

Rosslare Boxing Club: Austin 087 9886353

Rosslare Schoolboys/girls: Stephen Ainsworth 0833469211

Rosslare Youth Club: See Facebook page

Sewing: Noeleen 086 4057567

Shine Bright Theatre Drama Classes: Lisa 085 1532705

St. Pauls: Leo 086 3103417

Spanish Class: Ernesto 089 406 1606

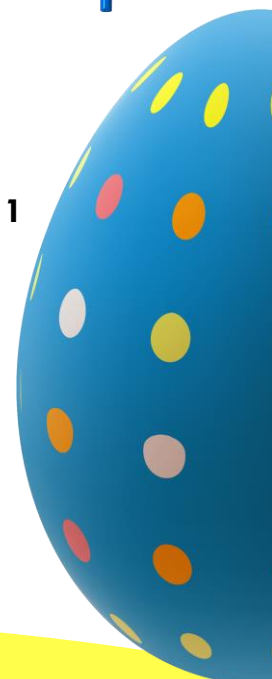
Tennis Club: Val 086 8273212

Tennis Lessons: Emil 085 723 9738

Women's Shed: Gemma 085 1833251

Yoga: Sharon 086 1943527

Pickleball – Community Centre



In Rosslare

Scoil Mhuire Rosslare The school will be closed for holiday from Monday 25th March to Friday 5th April (incl). We wish all the pupils and staff a very Happy Easter – enjoy the break. Go easy on the chocolate.....

Tennis Emil's Tennis camps run throughout the Easter holiday, offering 3 x 4 day camps. 9-11am sessions for 6-10 yr olds and 11am-1pm sessions for 11yrs+. €60 per camp. Please contact Emil on 085 7239738 to book your child's space.

!Ola! Easter Ernesto's Easter Camp gives your child an opportunity to have fun, play and create, while picking up a little Spanish on the way. Camp runs from 2-5 April (10am to 1pm). For more information and to book a place, contact Ernesto on 089 4061606 or at info@olalanguages.ie.

Nutty Scientists Regular visitors to the Centre, the Nutty Scientist provide a fun atmosphere where junior scientists get to experiment and explore. The lab is open from 10am-1pm from 2-5 April. Suitable for 5-12years. Book online at www.nuttyscientists.com/wexford or call on 087 9116117 for more information

Youth Club Open to all of secondary school age. The group meets every Friday at the Centre (7-9pm) with regular cinema outings and day trips organised throughout the year. Contact them through their Facebook page for more info and registration details – Rosslare Youth Club.

Little Steps The teeny tiny youth club! Toddlers and their parents/carers meet every Thursday morning from 9.30 to 11 to chat and play in a warm friendly environment. Come along any Thursday morning. €2 voluntary donation. Refreshments provided. Note; The group will NOT be meeting on Thursday 4th April.

Rosslare Tea Room We are open over the Bank Holiday weekend till 4pm, serving a wide range of beverages and tasty treats. Enjoy the garden views from a cosy spot by the window.

Social Nights The team are on a well-earned break for the month of April, but already have booked their May dates in the diary. The next gathering takes place on Tuesday 7th May - all are welcome to attend for an evening of conversation and song, with occasional guest speakers. Refreshments are provided. For more information contact the Centre on 053 9132202.

Admin Service We offer a full admin and secretarial service at the Centre including photocopying, printing, scanning and typing, at very competitive prices. We will contact you when work is ready for collection. We can also offer a number of indoor spaces catering for gatherings such as training sessions or classes. To discuss your requirements or for more information, please contact us on 053 9132202.

Badminton The group meet every Saturday at 12 noon and on Wednesday evenings at 7.30pm. All ages and abilities are welcome. Contact Isobel on 087 9192550 if you would like to get involved.

Pickleball Taking Rosslare by storm, the game of Pickleball is a bat and ball game played on a badminton court. A group of players meet regularly each Wednesday morning at 10am. If you would like more information, give us a call on 9132202 and we will put you in touch with the group.

New 2 U Charity Boutique Our wonderful little treasure trove of a shop continues to offer an ever changing array of women's fashions, shoes, jewellery, bric a brac and small household items. Open throughout the Easter holiday. ALL DONATIONS TO ROSSLARE COMMUNITY CENTRE please.

Community Book Shelf €1 per book from our Community Shelf. All proceeds go towards the Centre's development. We are always grateful to receive second-hand books, especially fiction, history and biographies/autobiographies.

Access for All Garden Order your hot drink of choice and a little nibble from [Rosslare Tea Room](#) before taking a stroll through the gardens, Worth a look at any time, the garden always looks its best during the late Spring and early Summer months, thanks to the hard work of volunteer group Friends of Rosslare



Advertisements

OPEN ALL YEAR ROUND

Useful numbers

Local Services

Grange Launderette (beside Londis)
 Blondies Hair & Beauty
 Rosslare Pharmacy
 First Choice Energy Plumbing & Heat
 Nigel Kelly Driving Instructor
 Fran Kelly – general maintenance
 Eamonn O'Connor Electrician
 Ger Thomas – Electrician
 Austin Codd Groundworks & Plant Hire
 Dave Walsh Carpets & Flooring
 Brady Builders
 Morris Maintenance
 Jock McMahon – Painting & Decorating
 Strand Electrical Services (Darren)

053 9132590
 053 913 2865
 0539173414
 086 6670448
 087 2427828
 087 940 5233
 087 2501491
 086 8299967
 087 9886353
 087 2519536
 086 2368975
 085 2879891
 086 8975979
 085 2309231

Restaurants

Kelly's Hotel
 Coast Hotel
 Wild and Native
 Sharky's Fish & Chips
 Izmo
 Kelly's Deli
 Redmond's The Bay
 Sea Shell Takeaway
 Rosslare Golf Club

053 9132114
 053 9132010
 053 9132668
 053 9132382
 053 9132373
 085 877 1339
 0879829350
 053 9173607
 053 913 2203

Taxis

Michael 087 295 9990

Societies & Organisations

Fr James 053 9132118/ 087 8152637
 Samaritans 01 6710071
 Childline 1800666666
 CareDoc 1850334999
 Fire Brigade 0539176585
 Garda 0539165200
 Rosslare Medical Centre 0539132800
 Dr. Maeve Hogan 0539131154

Easter
TENNIS CAMP
 25th to 28th March,
 29th March to 1st April
 & 2nd to 5th April
 9am to 11am for 6-10 yrs
 & 11am to 1pm for 11+ yrs
 4 day camp - €60 per place
 Book with Emil on 085 7259 738

Fun Activities for children 5-12 year old
SPANISH EASTER CAMP
 PLAY, ENJOY AND LEARN SPANISH
 Rosslare Community Center
 2ND - 5TH OF APRIL
 10AM - 1PM
Activities
 Games
 Easter Egg Hunt
 Crafts
 Crazy golf- basketball...
 Ball games
 Spanish songs and games
 ERNESTO- 089 406 1606

nutty Scientists
Easter Camp
 April 2nd to 5th 2024
 2pm to 5pm
 GOTO NUTTYSOCIETISTS.COM/WEXFORD
 or call 087 911 6117 to book

